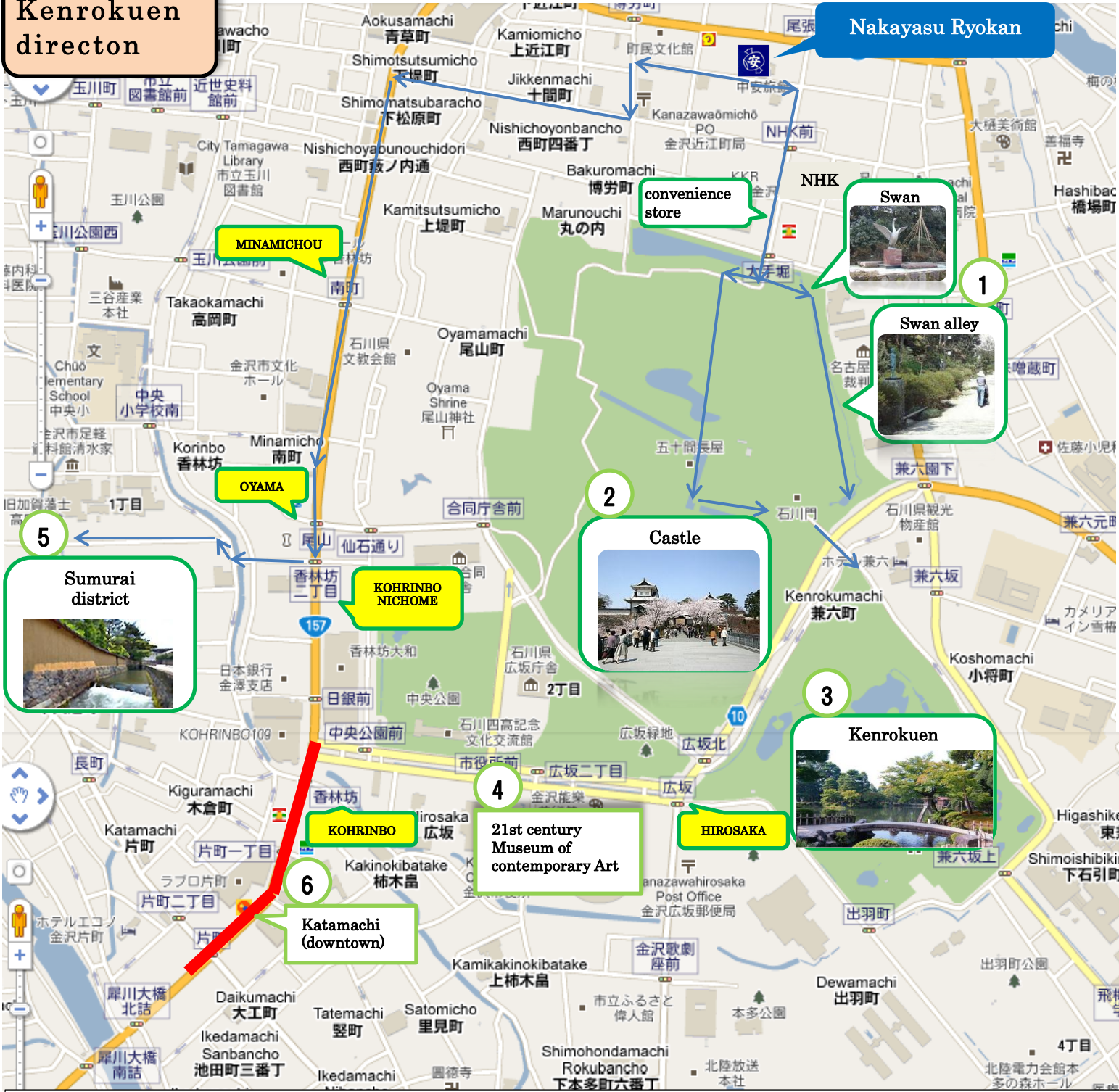


# Kenrokuen directon



1. Swan alley : This is a narrow alley leads to Kenrokuen. There are sculptures which made by art college students.
2. Castel : You can go to Kenrokuen through castle ruin.
3. Kenrokuen : 11mins walk
4. 21st Century Museum : 17mins walk
5. Sumurai district : 19mins walk
6. Katamachi : Down town. 22mins walk.

**Higashi Chaya District direction**



1. TAWARAYA : Oldest candy store in Kanazawa. This store was established about 170years ago. If you have crown, watch out! 10mins walk.
2. Kzuemachi : 5mins walk
3. Higashi Chaya district : 8mins walk
4. Morihachi : Sweets(especially for Tea ceremony) store. Established in 1625. 5mins walk